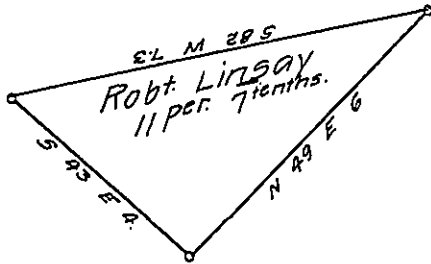




York County Shore.



Lancaster County Shore.

A Draught of Beech Island situate in Drumore township Lancaster County North of Hares Island & opposite to lands of one Smith on the East and Jacob Balmer on the west containing Eleven perches and seven tenths Neat measure surveyed in pursuance of a warrant dated the 25th day of September A. D. 1818 granted to Robert Lindsay.

Pr. Jacob Hibshman D.S.

To Jacob Spangler Esqr.
Surveyor General.

IN TESTIMONY that the above is a copy of the original remaining on file in the Department of Internal Affairs of Pennsylvania, made conformably to an Act of Assembly approved the 16th day of February 1833, I have hereunto set my hand and caused the Seal of said Department to be affixed at Harrisburg, this third day of January 1908

Henry Howard
Secretary of Internal Affairs.